

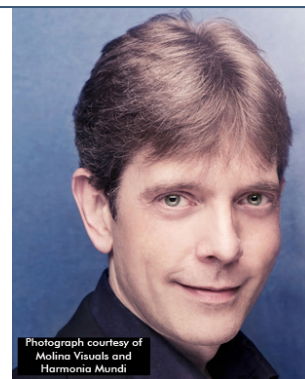
ARTIST BIOGRAPHY

Eugene Asti

Accompanist

Artist Manager: Sioned Jones

sioned.jones@harlequin-agency.co.uk



Eugene Asti is one of the most successful and sought-after collaborative pianists of his generation. In a distinguished career, he has partnered some of the world's greatest singers including Sir Thomas Allen, Nancy Argenta, Katherine Broderick, Alison Buchanan, Dame Sarah Connolly, Sophie Daneman, Neil Davies, Richard Edgar-Wilson, Rebecca Evans, Alessandro Fisher, Anna Grevelius, Susan Gritton, Sophie Karthäuser, Angelika Kirchschrager, Mhairi Lawson, Stephan Loges, Dame Felicity Lott, Hannah Morrison, James Newby, Mark Padmore, Dame Margaret Price, James Rutherford, Sir Bryn Terfel, Sir Willard White, Roderick Williams, Helene Wold and Catherine Wyn-Rogers. He has formed particularly close musical partnerships with Sophie Karthäuser, Stephan Loges and James Rutherford both on the recital platform and in the recording studio.

He has performed at venues such as the Wigmore Hall and the Barbican, London; the Musikverein in Vienna; Mariinsky Theatre in St Petersburg; the Concertgebouw in Amsterdam; the Kölner Philharmonie; the Palais des Beaux-Arts in Brussels; Symphony Hall in Birmingham; the Usher Hall in Edinburgh and Alice Tully Hall and Carnegie Hall in New York. Eugene appears regularly at the Oxford Lieder Festival and has devised and curated numerous recital series for King's Place, the Wigmore Hall and St. John's Smith Square in London.

He has recorded extensively for many record labels including Hyperion, Harmonia Mundi, Chandos, BIS, Signum and Lawo [see discography] and has performed many live broadcasts for the BBC, Radio France and RTBF (Belgium).

In 2009, to honour the bicentenary of Felix Mendelssohn's birth, Eugene devised and curated a recital series for the inaugural season at King's Place in London. In the same year he completed an edition of previously rare and unknown songs by Mendelssohn for the publisher Bärenreiter.

Engagements in recent seasons included recitals with Dame Sarah Connolly and Tenebrae Choir at the Wigmore Hall, and at the Oxford Lieder Festival; recitals with Sophie Karthäuser at the Kölner Philharmonie and in Zürich, the Pierre Boulez-Saal in Berlin and Palais des Beaux-Arts in Brussels at the L'Amphitheatre Vauban in Namur, The Théâtre de la Ville, Paris, the Aula Collegium Novum Hall in Krakow and at the concert hall in Blaibach; and concerts with Sophie Karthäuser, Mhairi Lawson, Stephan Loges, Alessandro Fisher and James Newby as well a masterclass at the Clara Schumann Festival at St John's, Smith Square in London. He also shared the platform with pianist Graham Johnson and seventeen of the finest young singers of today for a concert at the Wigmore Hall. Eugene is a Steinway Artist.

Artist biographies are updated frequently, so please contact us for the latest version. This biography should not be reproduced or altered without permission.

HARLEQUIN